

Komi: 5.5

Diagram 1: 1-50

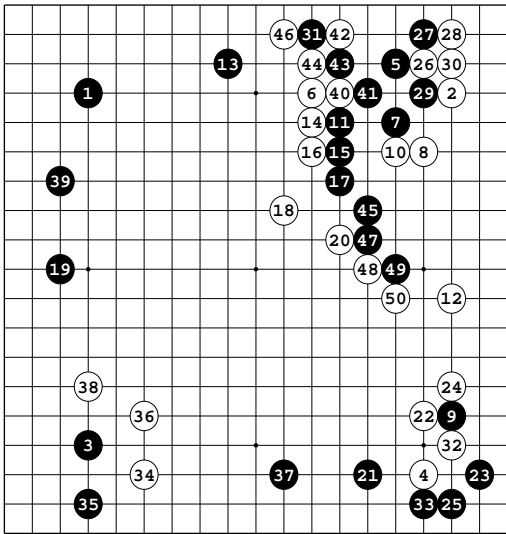


Diagram 2: 51-100

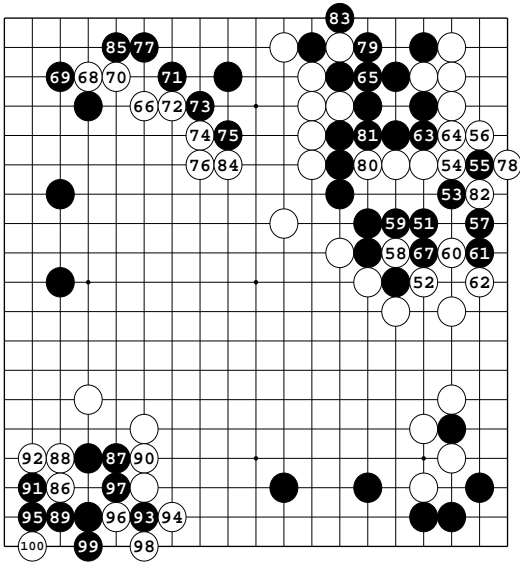
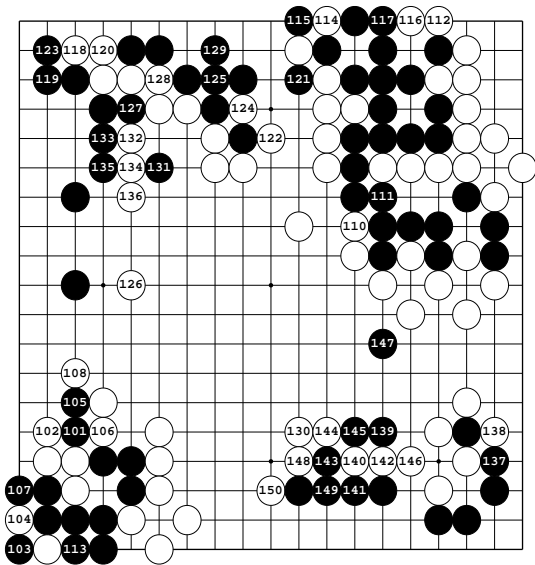


Diagram 3: 101-150

109 at 103



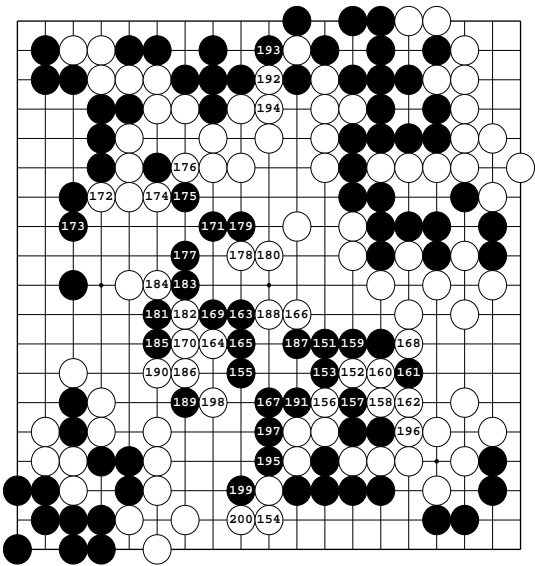


Diagram 4: 151-200

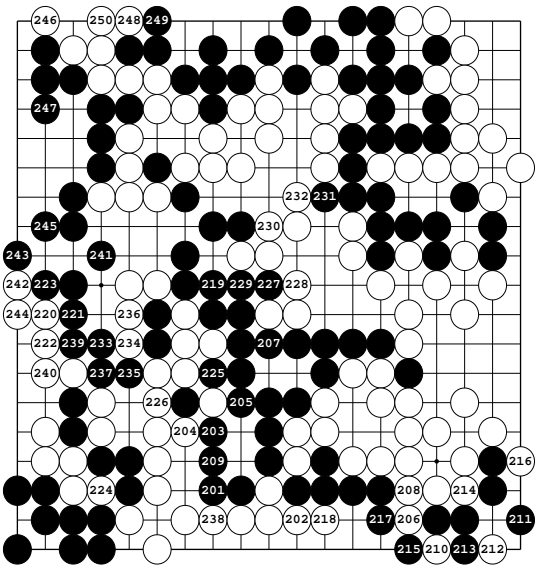


Diagram 5: 201-250

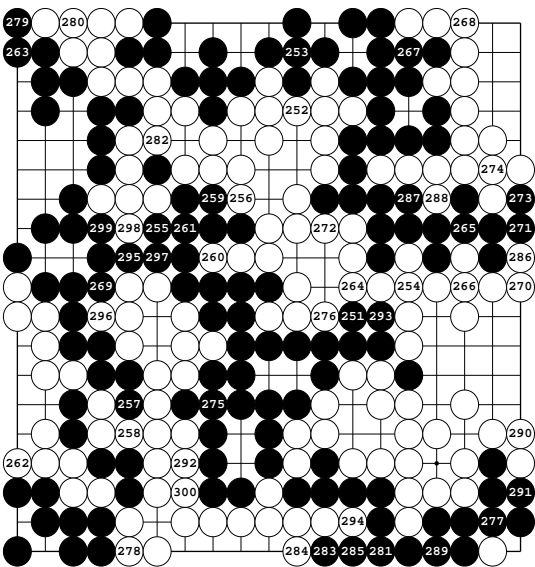


Diagram 6: 251-300

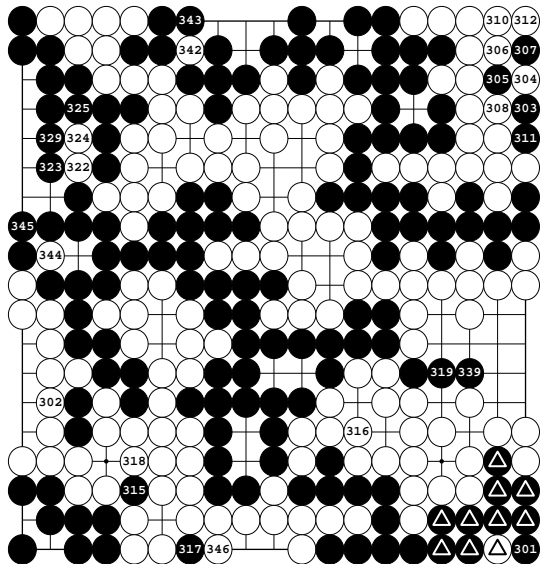


Diagram 7: 301-350

- 309, 313 at 304,
- 314 at 303,
- 320, 340 at △,
- 321, 347 at △,
- 326 at 307,
- 327, 341 at △,
- 328 at 305,
- 330 at 322,
- 331 at 301,
- 332 at △,
- 333, 348 at △,
- 334 at △,
- 335, 350 at △,
- 336 at △,
- 337, 349 at △,
- 338 at △,

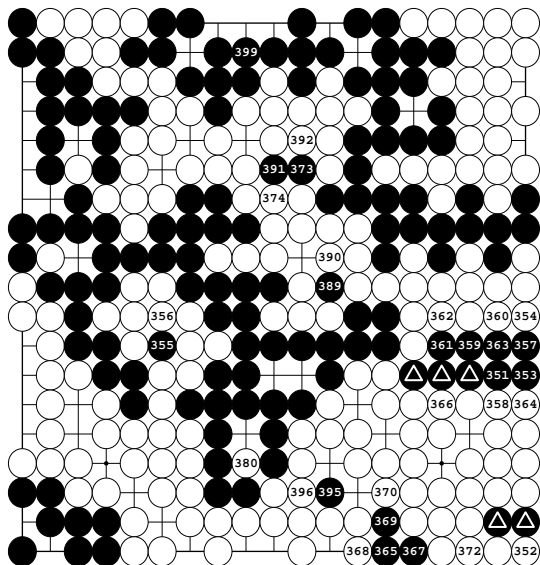


Diagram 8: 351-400

- 371 at △,
- 375, 398 at 365,
- 376 at △,
- 377, 397 at 367,
- 378 at 369,
- 379, 387 at 353,
- 381, 400 at 351,
- 382 at △,
- 383 at 359,
- 384 at 363,
- 385 at △,
- 386 at 357,
- 388 at △,
- 393 at 373,
- 394 at 391,

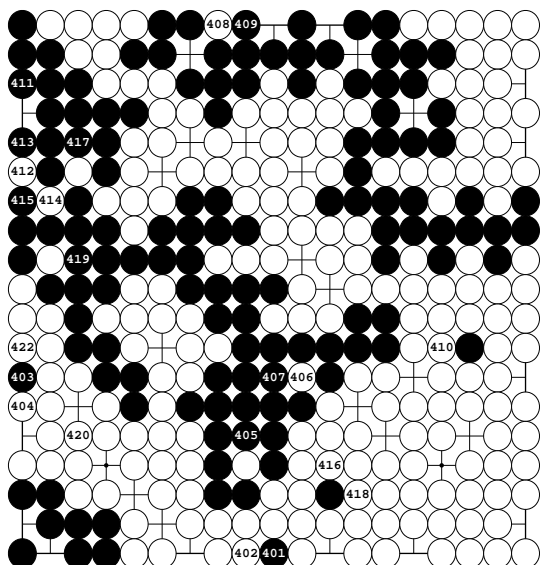


Diagram 9: 401-422

421: Black Pass

Black Pass

White Pass